

EtherBADGE

Low-Cost CAN FD, LIN, Automotive Ethernet & Analog Device

Introducing the EtherBadge, a low-cost tool for learning in-vehicle networking. EtherBadge supports Automotive Ethernet, CAN FD and LIN, as well as analog inputs and digital outputs on a single device. All of these networks and I/O can be controlled by the complimentary Trial Edition of Intrepid's powerful Vehicle Spy software as well as Intrepid's open source APIs.

With the EtherBadge, you can download real time scripts for simulations and gateways. It also has a companion device, the SwitchBadge. The SwitchBadge is a development and demonstration platform that connects to 100BASE-T1 devices including Intrepid's EtherBadge or can be daisy-chained with other SwitchBadges to experiment with larger networks.

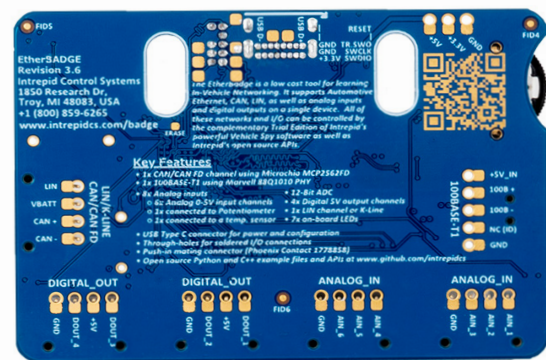
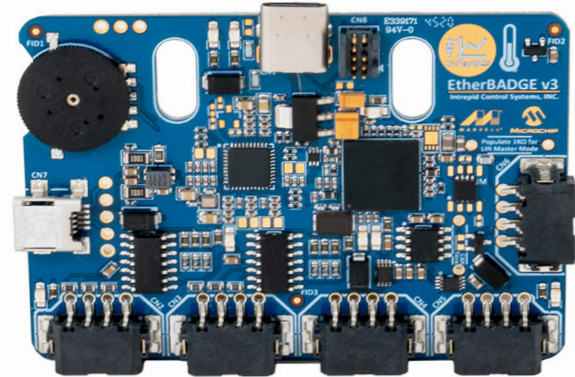
Features

- 1x 100BASE-T1 using Marvell 88Q1010 PHY
- 1x CAN FD channel using Microchip MCP2562FD
- 1x LIN channel
- 8 Analog inputs
- 6 Analog 0-5V input channels
- 1 Connected to potentiometer
- 1 Connected to a temperature sensor
- 4 Digital 5V output channels
- 4 LEDs for relay module simulation
- 12-Bit ADC (Analog to Digital Converter)
- USB Type C connector for power and configuration
- Through-holes for soldered I/O connections

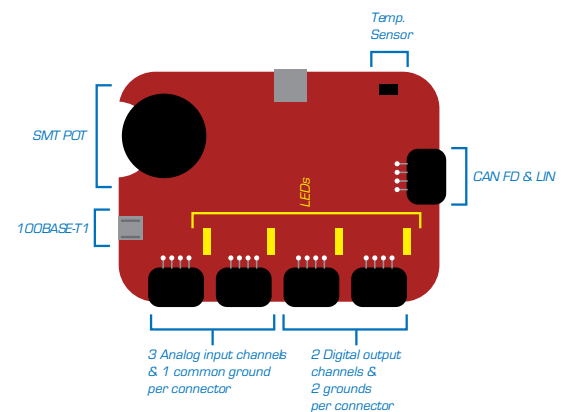
Ordering Information

Part Number	Description
ETHER-BADGE	Low-Cost CAN FD, LIN, Automotive Ethernet & Analog Device

* Specifications subject to change. Please contact Intrepid for the latest information.



- Push-in mating connector (Phoenix Contact 1778858)
- Open source Python and C++ and example files and APIs at www.github.com/intrepidcs



Rev. 20250206



INTREPID
CONTROL SYSTEMS
www.intrepidcs.com

1850 Research Drive
Troy, MI 48083 USA
Phone: +1 (586) 731-7950
Fax: +1 (586) 731-2274