

# RAD-Meteor

## Low cost device for interacting with 10BASE-T1S networks

Intrepid's RAD-Meteor is a cost-effective means to add a 10BASE-T1S (IEEE Std 802.3cg) port to your computer using USB. In addition to monitoring 10BASE-T1S traffic as if it were a standard Ethernet port, the RAD-Meteor network adapter supports the test modes and waveforms required to test the 10BASE-T1S network. RAD-Meteor also has a built-in full-color display to view network activity and monitor the 10BASE-T1S status registers.



### Features:

- USB network adapter with 10BASE-T1S Physical Layer (PHY)
- Enumerates as standard Ethernet NIC in Linux or Windows.
- Monitor Ethernet with Vehicle Spy or Wireshark
- TX/RX with socket applications
- Microchip LAN867X 10BASE-T1S PHY
- Terminal block with optional termination for T1S connections
- Device configuration and status register reporting over USB using Ethernet frames
- 320 x 240 Color display for monitoring network activity and displaying 10BASE-T1S status registers
- Stand-alone configuration of 10BASE-T1S parameters and test modes via 3-button interface
- Field-updatable firmware



**INTREPID**  
CONTROL SYSTEMS  
www.intrepidcs.com

1850 Research Drive  
Troy, MI 48083 USA  
Phone: +1 (586) 731-7950  
Fax: +1 (586) 731-2274

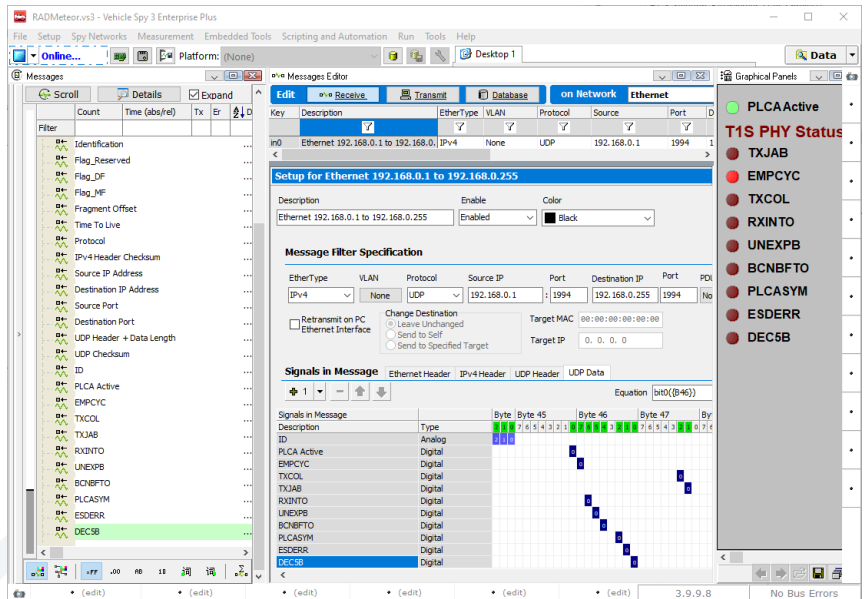


www.aeta-rice.com

# RAD-Meteor

## Vehicle Spy Support

Vehicle Spy from Intrepid contains many features for analyzing Ethernet networks that exceed that of Wireshark. This includes being able to transmit Ethernet frames, scripting, simulate ECUs and gateways, and decode protocols with OEM databases.



## Specification

- Power requirements 125 mA at 5 V (bus load 1%), 140 mA at 5 V (Test Mode 1)
- USB full speed interface (12 MBit/s)
- Micro USB connector
- Size: 65 mm x 35 mm (17 mm height)
- Field-updateable firmware with un-brickable bootloader
- USB network interface uses OS drivers in Linux and Windows

## Network

- Microchip LAN8670 10BASE-T1S Single Pair Ethernet PHY
- Microchip recommended LAN86xx Bus Interface Network (BIN)
- Jumper termination
- Terminal block (2 mm screw)

## ORDERING INFORMATION:

Part Number	Description
RAD-Meteor	Low cost device for interacting with 10BASE-T1s networks

Specifications subject to change; please contact Intrepid for the latest information. All trademarks are the property of their respective owners.

Rev. 20240205



**INTREPID**  
CONTROL SYSTEMS  
www.intrepidcs.com

1850 Research Drive  
Troy, MI 48083 USA  
Phone: +1 (586) 731-7950  
Fax: +1 (586) 731-2274



www.aeta-rice.com